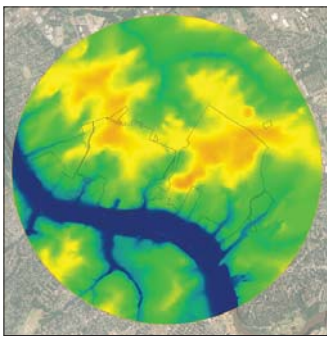


RUTGERS UNIVERSITY

Rutgers University Busch & Livingston Stormwater & Landscape Management Master Plan

Piscataway, New Jersey



from top: Final master plan;
Topographical analysis of campus

Applying a holistic, ecosystems-based approach, Biohabitats developed a Stormwater and Landscape Management Master Plan (SWLMMP) for the Busch and Livingston Campuses of Rutgers University.

The Biohabitats team began by developing a sound understanding of the existing ecological conditions and green infrastructure resources

By integrating stormwater management and ecosystem enhancement, the University can cost-effectively exceed many state and local regulations while also improving the ecological health and sustainability of its campuses.

of the 1,700 acres of campus and surrounding areas. The Biohabitats team was then able to explore opportunities to enhance and integrate these assets throughout the campuses while also providing the highest level of water quality and quantity controls.

The recommended strategy considered fiscal efficiency of treatment measures that optimize treatment capability, ecological function and landscape position. Long-term operation and maintenance considerations were also factored into the strategy to account for desired longevity and performance.

The overall planning approach for this project focused on conservation, restoration and retrofitting and sustainable landscape and stormwater management for future development. Biohabitats identified principles and techniques that could be applied throughout various University settings, yet were specific enough to reflect the unique ecological characteristics and opportunities on the Busch and Livingston campuses.

SERVICES

Planning
Concept Design
Stormwater Management
Policy/Guidelines

*conservation planning
ecological restoration
regenerative design*



800.220.0919

www.biohabitats.com

