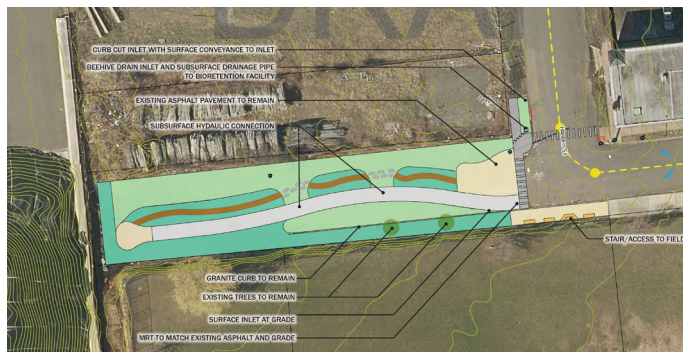


## Mill River Trail Green Infrastructure Corridor

New Haven, Connecticut



*From top: Concept for sidewalk parklet; The parklet will connect to the Mill River Trail, shown here in progress.*

Recognizing the potential of the Mill River, a body of water long associated with industry, as a natural and recreational resource for the city through which it flows, the City of New Haven created the Mill River Trail Framework Plan in 2017. The plan aims to reclaim the river as the city's central corridor by creating a riverside trail that links over 300 acres of green space and reconnects citizens to each other and to nature. Separately, in attempt to address water quality in river, Connecticut Fund for the Environment/Save the Sound (CFE/STS) produced the Mill River Watershed Based Plan. Among other strategies, the plan called for the implementation of both grey and green infrastructure

*A green infrastructure “parklet” restores beauty, biodiversity, and ecological function to a neglected urban site while connecting it to a larger riverine trail system and managing stormwater runoff.*

to manage stormwater and prevent Combined Sewer Overflow (CSO) and urban runoff discharges to the Mill River during heavy rain.

At one particular site along the proposed Mill River Trail, a 12,000-square-foot section of dead-end, unused roadway suffers from frequent flooding and has become an eyesore due to dumping. CFE/STS recognized that this area could become both a public recreational asset and manage stormwater runoff to reduce CSOs. In an effort to retrofit the site to optimize stormwater management and improve its ecological function CFE/STS turned to Biohabitats.

After reviewing background information, visiting the site, and analyzing its hydrologic conditions, Biohabitats developed contract drawings and prepared a cost estimate for a green infrastructure

stormwater management design based on a preliminary concept that had been prepared for the Mill River Watershed Based Plan. The design calls for the removal of impervious surface and the creation of a “parklet” featuring bioretention practices, public gathering areas, native plantings, and a multi-purpose path, which will link to the larger Mill River Trail.

When complete, the parklet will not only receive and treat runoff from the adjacent roadway, it will also enhance the beauty, connectivity, biodiversity, and ecological function of the Mill River Trail and the surrounding Fair Haven community.

### SERVICES

Engage  
Plan  
Engineer & Design  
Manage  
Evolve  
Regenerate



800.220.0919  
www.biohabitats.com

