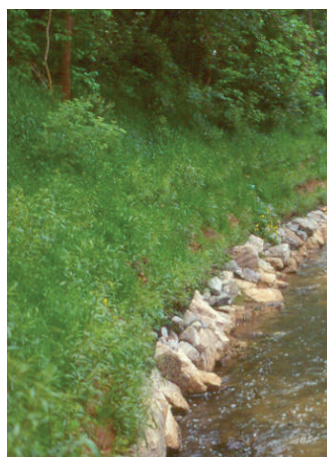
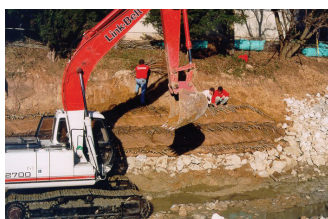

LOUISVILLE/JEFFERSON COUNTY METROPOLITAN SEWER DISTRICT

Beargrass Creek Streambank Stabilization

Louisville, Kentucky



In one of the first natural bank stabilization projects undertaken by the Metropolitan Sewer District, vegetation was used in the place of riprap or gabions.

Biohabitats was a key member of a team hired by the Louisville/Jefferson County Metropolitan Sewer District to analyze and restore a 500-foot section of Beargrass Creek near the Lakeview Condominiums. After performing an assessment of the Creek, Biohabitats developed a design concept, prepared final design documents and provided construction oversight.

The project involved storm-rain channel restoration, soil bioengineering stabilization, and restoration of two acres of riparian habitat.

SERVICES

Inventory & Assessments
Design
Construction Oversight

conservation planning
ecological restoration
regenerative design



800.220.0919
www.biohabitats.com

