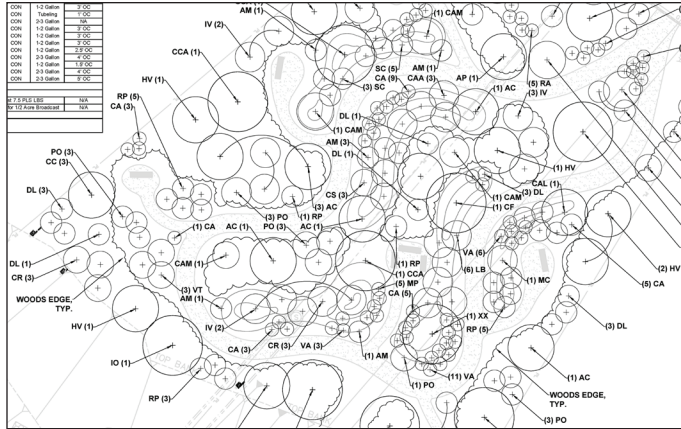


Pocket Park Native Plant Landscape Plan

South Euclid, Ohio



Vacant, adjacent lots are transformed into an urban park that provides habitat for wildlife and a peaceful pocket of open space for city residents.

Biohabitats and the City of South Euclid developed a concept for two adjacent, city-owned, vacant parcels. The objective was to create a quiet, low-maintenance, contemplative pocket park complete with a meandering trail and a series of offset “sitting rooms.”

Biohabitats based the trail layout on the site’s existing vegetation, predominately mature white oak. This vegetation, along with landscaping berms and new vegetation, creates a series of “sitting rooms” removed from the trail and road.

Each landscape berm is planted with a palette of native

plants suited for either birds, butterflies and hummingbirds, honey bees, and edibles for humans. These berms/beds are strategically placed to take advantage of canopy openings to provide additional sunlight to plants, thus expanding the available plant palette. Remaining portions of the site will be planted with a combination of woodland understory trees and shrubs to further attract wildlife and enhance the quality of the “sitting rooms.”

SERVICES

- Inventory & Assessments
- Planning
- Parks
- Design



from top: Landscape plan; Two native plants specified in plan—black chokeberry (left) and flowering dogwood (right)

*conservation planning
ecological restoration
regenerative design*



800.220.0919
www.biohabitats.com

