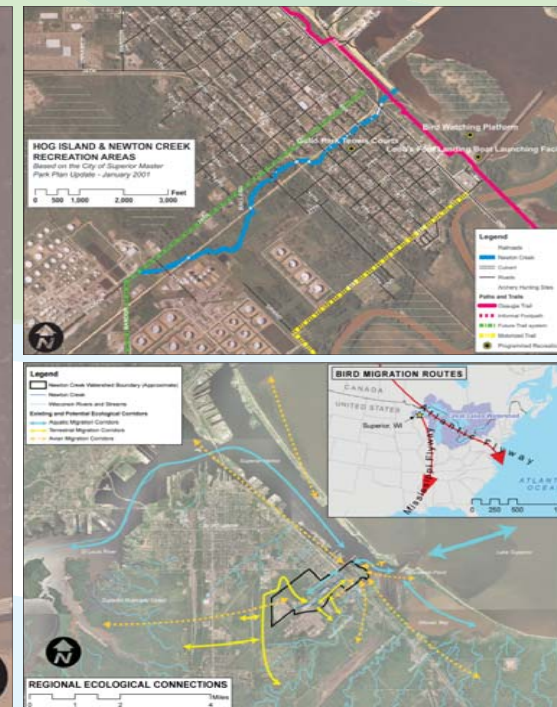
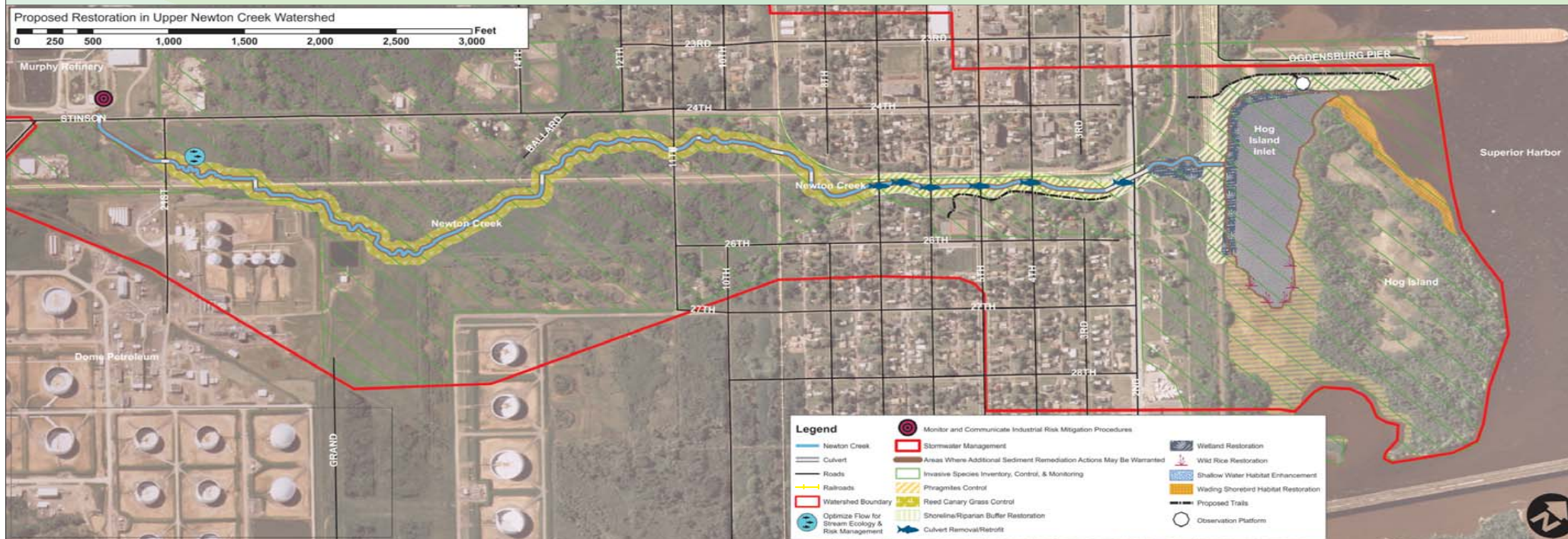


Hog Island: Ecological Restoration Master Plan



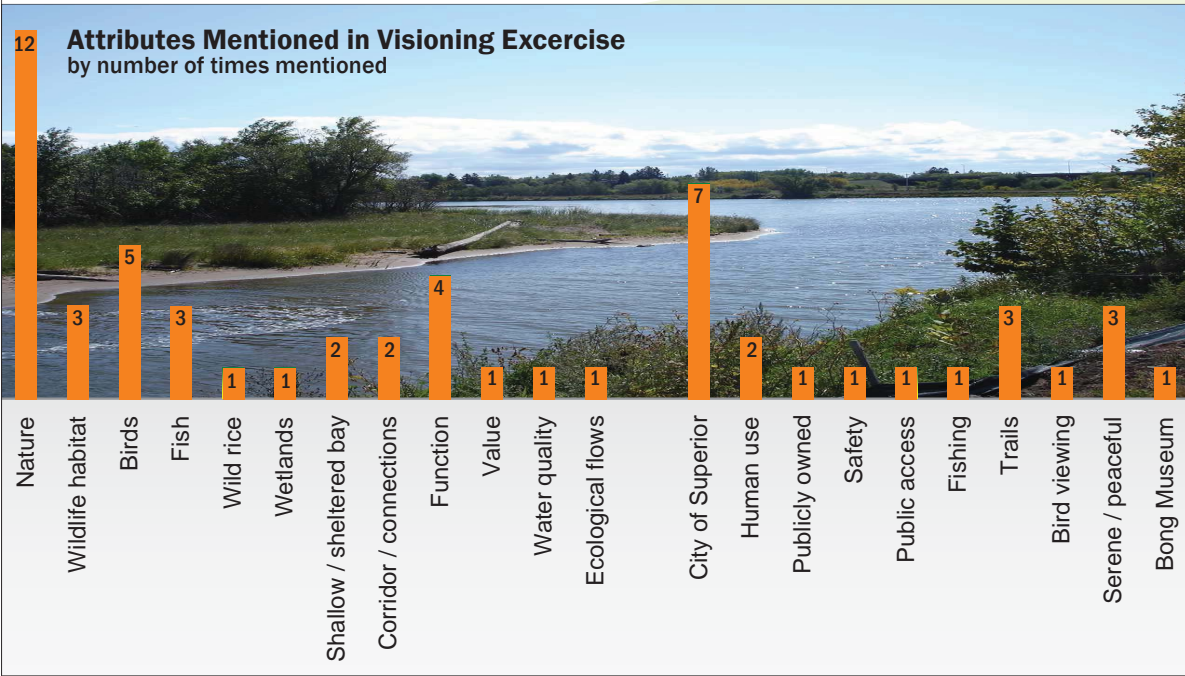
Proposed restoration projects incorporate existing recreation areas and regional ecological connectors such as bird migration routes.

- 🍁 First ecological restoration plan completed in the Great Lakes for a U.S. EPA designated “Area of Concern”
- 🍁 Stakeholder-driven process resulted in a restoration plan embraced and stewarded by the community
- 🍁 Plan incorporates passive recreation to integrate people into the restored landscape
- 🍁 Previously contaminated, degraded site will be restored to a self-sustaining & resilient ecosystem
- 🍁 Project will guide future ecological restoration projects & master plans in the Great Lakes basin



800.220.0919
www.biohabitats.com

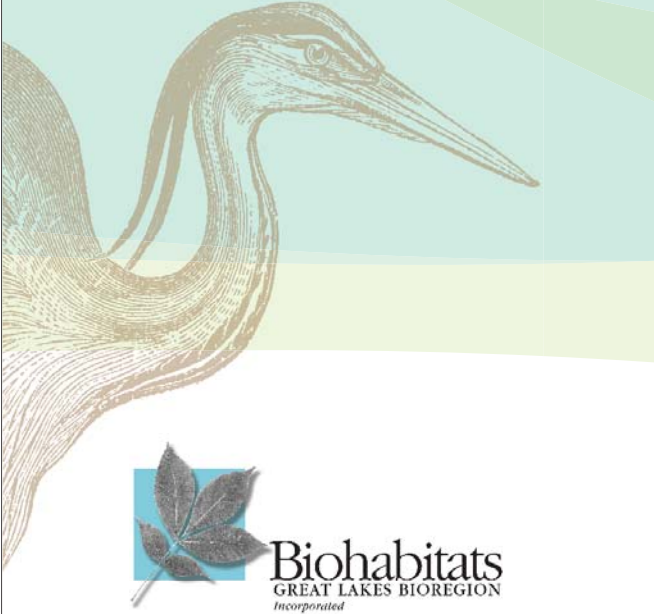




Vision Statement

Restore natural, diverse and self-sustaining ecosystems in Hog Island, the Hog Island Inlet, and the Newton Creek watershed. Make this project a leading example for Great Lakes ecosystem restoration efforts, and provide serene, safe natural areas for the residents of the City of Superior and Douglas County.

Plan Development Process



Guiding Principles

- Functional groups are present or have the ability to successfully colonize.
- Reproducing populations of target species are present.
- Characteristic assemblages of species/communities as in reference ecosystems are present.
- Indigenous species are present.
- Self-sustaining natural communities are present.
- Potential ecosystem threats are eliminated or reduced.
- Ecosystems are resilient to normal ranges of ecological stress.
- The restoration site is integrated into a larger ecological landscape.
- Habitat diversity is maximized.
- The goals of the Lower St. Louis River Habitat Plan are integrated.
- Sensitive ecological areas are placed under permanent protection.
- Restoration and resources management occurs according to watershed-planning principles.
- Educational and volunteering opportunities are integrated.
- Human uses which compromise long-term ecological sustainability are restricted.
- The plan is flexible, allowing integration of new ideas and stakeholders.

